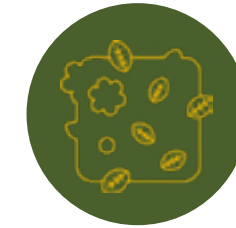


# Living Walls

Liven up empty spaces  
with natural beauty







## Contents

Introduction to Living Walls	04
Working with <b>phs</b> Greenleaf	06
Plant Box Living Wall	08
Biotope Tile System	09
Live Panel System	10
Live Pictures	11
Live Dividers	12
Moss Walls	13
Green Screens	14
Bespoke Projects	15
Hydroponic system	16



## Liven up empty spaces with **natural beauty**

---

Living walls offer a sustainable way to decorate and enhance interior and exterior environments.



### **Incorporating plants into the built environment**

---

Many urban environments have sadly lost touch with nature, despite the many health benefits associated with it.

Living walls offer an easy way to add plants to the interior and exterior of your premises. There are lots of different types of living walls to choose from, including wall tiles, framed plants, and free-standing space dividers.



## Why choose a living wall?



### Clean the air

Plants absorb CO<sub>2</sub><sup>[1]</sup> and other irritants from the air by breaking them down to use for their own growth. This includes dust, pollen, fungal spores, and bacteria<sup>[2]</sup>.



### Boost wellbeing

Plants can be used to boost mental and physical health. Interior planting can even reduce levels of fatigue amongst building users by 38%<sup>[3]</sup>.



### Biophilic design benefits

Being surrounded by nature and natural design elements is beneficial for humans. Plants have been proven to positively boost the mood of building users by 58%<sup>[4]</sup>.



## Living walls from p<sup>h</sup>s Greenleaf

**p<sup>h</sup>s Greenleaf** is the UK's leading supplier of living walls. We offer a range of indoor and outdoor options, with real and artificial planting options available.

Whatever the environment or location, our specialist team members can recommend the ideal plants for your living wall.

They'll then carrying out installation with minimal interruption to your business.

With over 25 years of horticultural experience, there isn't a better team to place your trust in. To learn more about our products and services, get in touch today.

## What to expect from us:

**A bespoke design service.** We will fully manage all your planting needs. Working with you to generate initial ideas, before bringing your dream design to life.

**Delivery and installation.** We will deliver and install your chosen living walls at a time to suit you and your business. Installation is available across the whole of the UK.

**Ongoing plant care.** Our highly knowledgeable horticultural technicians will conduct regular maintenance visits and tend to your plants throughout your contract.

<sup>[1]</sup> Based on a research study by adjunct professor Margaret Burchett. Sydney University of Technology <https://www.architectureanddesign.com.au/news/indoor-plants-have-a-positive-effect-on-health>

<sup>[2]</sup> Torpy, F.R., Irga, P.J. and Burchett, M.D., 2014. Profiling indoor plants for the amelioration of high CO<sub>2</sub> concentrations. Urban forestry & urban greening, 13(2), pp.227-233.

<sup>[3]</sup> <sup>[4]</sup> Wolverton, B.C., Douglas, W.L. and Bounds, K., 1989. A study of interior landscape plants for indoor air pollution abatement (No. REPT-6

## We do more than you think

**p<sup>h</sup>s Greenleaf** are committed to improving sustainability and social impact throughout our organisation – from new initiatives and products to ongoing work that builds on our past achievements.

By using **p<sup>h</sup>s Greenleaf**, organisations can make a difference to the environment and their bottom line as well as telling a good news story. It's all about doing the right thing.



## Box System

A stackable modular wall with a simple and efficient integrated watering system.



## Tile System

Modular tile panels with a unique and patented water irrigation system.



Suitable for: Indoors

### Benefits:

- Instantly refresh and brighten interior environments.
- Designed to be ground bearing but can be wall mounted.
- A highly versatile way to create a vertical living garden.
- Can be designed to suit any size wall.

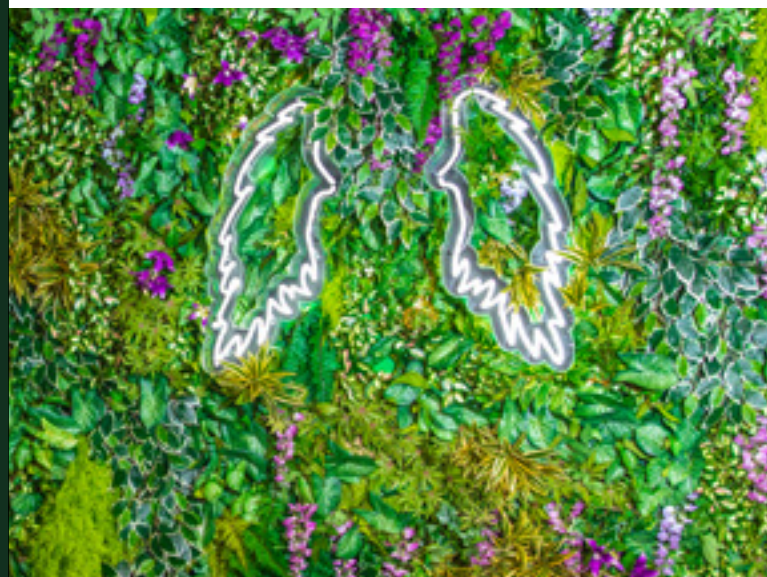
### Product specification

#### Base material

100% recycled polypropylene

#### Plant capacity

33 plants per m<sup>2</sup>



Suitable for: Indoors (installations over 45m<sup>2</sup>)

### Benefits:

- Easily monitor nutrients content of plants.
- Great for mixing a variety of plants.
- Uses minimum volumes of necessary water.
- Can be designed to suit any size wall.

### Product specification

#### Base material

100% recycled polypropylene



## LivePanel

An all-in-one modular system that can be installed quickly and easily.



Suitable for: Indoors

### Benefits:

- Can be designed to suit any size wall.
- No electricity, pump, or water drainage.
- Ideal for projects requiring a quick turnaround.

### Product specification

#### Plant capacity

- 2 x 3: 54 plants
- 3 x 2: 54 plants
- 6 x 4: 216 plants



## LivePicture

A creative and innovative system that turns plants into framed pieces of art.



Suitable for: Indoors or Outdoors

### Benefits:

- A unique way to incorporate plants into your interior design
- Great for areas with minimal wall space available.
- Personalised colour and logo designs available on request.
- Can be designed to suit any size wall.

### Product specification

#### Standard colours

Black or White

#### Base materials

Frame: ASA  
Plant cassette: Expanded polypropylene

#### Plant capacity

Six plants per panel

#### Recommended plants

Houseplants, succulents, herbs, and grasses



## LiveDivider Plus

A free-standing plant-filled room divider that creates inspirational environments.



## Moss Walls

Make a striking and eco-friendly design statement with a preserved moss wall.



Suitable for: Indoors

### Benefits:

- A sustainable and simple way to divide interior spaces.
- Plants on both sides of the divider for maximum impact.
- Create private areas that are warm and welcoming.
- Can be designed to suit any size wall

### Product specification

#### Colours

White, black, or custom

#### Plant capacity

Six plants per cassette



Suitable for: Indoors

### Benefits:

- Persevered moss is very low-maintenance.
- Brings a sense of calm to any environment
- Improves room acoustics and absorbs sound.
- Can be designed to suit any size wall.

### Product specification

#### Base material:

MDF





## Green Screens

Pre-grown screens for instant impact, ideal for use as construction site hoarding.

Suitable for: **Outdoors**

### Benefits:

- An easy and effective way to create privacy.
- Works to prevent graffiti of outdoor spaces.
- A low maintenance way to boost aesthetics.
- Can be designed to suit any size wall.



## Bespoke projects

With such a wide choice, we understand it can be hard to decide what living wall will be best for your premises.

Our planting experts can work with your business to come up with a bespoke solution to suit your needs.

Living walls can be used in harmony with other **p**hs Greenleaf planting solutions, including office plant hire, exterior hanging baskets, and grounds maintenance.

Speak to an expert

0800 090 2325

Block B, Western Industrial Estate,  
Caerphilly, United Kingdom, CF83 1XH

[greenleafsales@pshs.co.uk](mailto:greenleafsales@pshs.co.uk)  
[pshsgreenleaf.co.uk](http://pshsgreenleaf.co.uk)



## Hydroponic system

A modular system that is easiest to install, to plant and to maintain, requiring no soil and supports manual or automatic irrigation.

---

### Benefits:

- Can be designed to suit any size wall.
- Requires no soil.
- Available as room divider, double- or single sided.
- Instantly creates a healthy and relaxing interior environment.
- Offers complete coverage.









**pHS** Greenleaf, Unit 2 Varlin Court  
Western Industrial Estate, Caerphilly CF83 1BQ

**0800 090 2325 | [greenleafsales@pHS.co.uk](mailto:greenleafsales@pHS.co.uk) | [pHSgreenleaf.co.uk](http://pHSgreenleaf.co.uk)**

**pHS** Group a company registered in England & Wales. Company Registration No. 05384799

  Follow us at **pHS** Greenleaf